

Dual counterbalance 双向平衡阀

VBCD DE

08.48.11 - X - Y - Z



Technical data

Max. operating pressure 最大工作压力	410 bar (5945 psi)
Max. flow 最大流量	60 l/min. (16 gpm)
Weight 重量	see "Dimensions"
Manifold material 材质	Zinc plated steel 镀锌碳钢
Fluid 介质	Mineral oil (HL, HLP) according DIN 51524
Fluid temperature range 流体温度范围	-30 °C to 100 (-22 to 212 °F)
Viscosity range 粘度范围	5 to 800 mm ² /s (cSt)
Recommended degree of fluid contamination 建议污染防护程度	Class 19/17/14 according to ISO 4406
Other technical data	see data sheet 18350-50

Relief setting: at least 1.3 times the highest expected load.

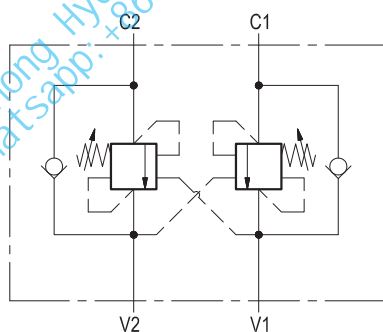
Note: for applications outside these parameters, please consult us.

溢流阀设定：至少是最高负载的1.3倍

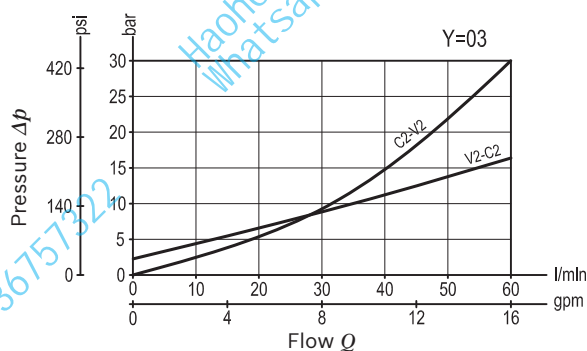
Description 简述

It provides static and dynamic control of load by regulating the flow IN and OUT of the actuator, through ports C1 and C2. This valve module includes 2 sections, each one composed by a check and a relief valve pilot assisted by pressure in the opposite line: the check section allows free flow into the actuator, then holds the load against reverse movement; with pilot pressure applied at the line across, the pressure setting of the relief is reduced in proportion to the stated ratio until opening and allowing controlled reverse flow. Back-pressure at V1 or V2 is additive to the pressure setting in all functions.

它通过调整进回油的流量实现对油缸的动态、稳定控制。平衡阀包含两个部分（单向阀和溢流阀），每一侧都包含一个单向阀和先导溢流阀（先导油的压力由对侧提供）。单向阀部分允许油液进入油缸并阻止反向流通；同时向对侧提供先导压力油，随着先导油压力增大，根据固定的先导比从而影响溢流阀的阀芯开度，直到允许油液流出且时刻控制油液。



Characteristic curve 特征曲线



Ordering code 订货代号

08.48.11	X	Y	Z
----------	---	---	---

Dual counterbalance 双向平衡阀

Pilot ratio 先导比

03 4.2 : 1

油口螺纹

Port sizes	V1 - V2	C1 - C2
02	G 3/8	G 3/8
03	G 1/2	G 1/2

SPRINGS 弹簧		
Adj. pressure range bar (psi)	Pres. increase bar/turn (psi/turn)	Std. setting Q=5 (l/min) bar (psi)
20 60-210 (870-3000)	63 (914)	200 (2900)
35 180-350 (2610-5000)	138 (2001)	350 (5000)

Pressure setting up to 410 bar: code on request.

Tamper resistant cap code ordering code 11.04.23.002
Mat. no. R930000752



Preferred types

Type	Material number
084811030220000	R930006936
084811030235000	R930006445

Type	Material number
084811030320000	R930006817
084811030335000	R930006818

Dimensions

